

LOCATION MAP

Map Not to Scale

# M apeksha's METROPOLIS COMMERCIAL TOWER



# M apeksha's METROPOLIS Commercial Tower Chomu, Jaipur

# SAMPLE FILE

Scan QR Code  
For Google Location



Promoters & Developers  
**APEKSHA GROUP OF COMPANIES**

Corp. Add: 403, Alankar Plaza, Central Spine,  
Vidhyadhar Nagar, Jaipur, Rajasthan-39

info@apekshagroup.com | Tel: 0141 2231787 | Mob: 9829 085 860

**Disclaimer:** This Brochure is a presentation and not a legal document. All drawings, amenities, facilities, 3d views/elevations are subject to change as per the respective authorities/developers. Images, 3d views, and elevations shown above are an artistic conceptualization/impresion and do not purpose to replicate the exact products.



IDEAL FOR

SHOWROOMS  
SHOPS  
OFFICES  
RESTAURANTS

SERVICE CENTRE  
DIAGNOSTIC CENTRE  
COACHING INSTITUTES  
DOCTOR'S CLINIC

IT FIRMS  
LAW CHAMBERS

Our Projects



विला एवं प्लॉट्स  
APEKSHA CITY, AJMER



ATELIER, JAIPUR



RUDRAKSH, JAIPUR



FESTIVA, JAIPUR



JAI VILAS, JAIPUR



SIDDHI VINAYAK, JAIPUR



BALAJI CITY, JAIPUR



GOVIND SAROVAR, JAIPUR





## About Us

It's been 18+ Years of Experience in the Real-Estate industry. We provide solutions to every property seeker because we value every customer, and this is what makes us better than our competitors. With high standards concerning deliverables, we at Apeksha provides best lifestyle, something that's worth all your time and money.

### Apeksha's Corporate Values:

Apeksha Group continuously endeavors to provide the best homes for people, and we're doing their work efficiently. Besides understanding the changing needs that people have, Apeksha Group makes sure that a home always fits in the buyer's budget. Our business philosophy isn't based on just one thing, it's more than a business, it is a team of fast-moving and dynamic individuals.

**1.Consideration towards the environment:** - At Apeksha, we understand our responsibility towards the environment, and we make sure to fulfill it. Our review doesn't rest on just one thing, but many of them, and our sole purpose is to balance the environment besides constructing luxurious homes. Our buildings include gardens and other forms of vegetation to make sure there's control on the increasing temperature. We aspire and inspire to build better buildings and a better environment.

**2. Consideration towards customers:-** Our clients are the people who help us keep growing and achieving new milestones. In all the buildings that we architecture, we make sure that there are ample facilities for the customers and they get the attractive result of their investment. Right from a Gymnasium to other facilities, we ensure everything is provided to the customers.



# SPOTLIGHT BUSINESS SPACES

CHOMU'S PREMIUM OFFICES,  
SHOWROOMS & OTHER BUSINESS SPACES  
LOCATED IN THE HEART OF THE TOWN

If you're looking for sleek and stylishly commercial spaces in chomu town, Metropolis is our newest commercial tower, offering business owners sensational business spaces.

Situated within walking distance of some of Chomu's most famous hospitals and commercial areas, with the iconic medical hobs of town in the distance, Metropolis offers the perfect base for exploring the exciting and trendy highlights of The Chomu Town, with hotspots like main highway and Chomu mandi, just a short stroll away.

SAMPLE FILE

## BUILDING HIGHLIGHTS

- M** Bold Architecture
- M** Natural Materials
- M** Internet Connectivity
- M** Water Purification
- M** 24x7 Power Backup
- M** Panoramic Roof Terrace
- M** E Charging Points
- M** Basement Parking
- M** 24x7 Security
- M** High - Speed Elevators



# METROPOLIS



## MEDICAL PRACTITIONERS

Metropolis offers dedicated chambers for doctors. Due to medical ambiance in the vicinity, these chambers will be more profitable.



## COACHING INSTITUTES

Best place for coaching centers in town. The building provides the best facilities to run operations smoothly like ample parking space and ventilated area that facilitates best in the covid time.



## SHOWROOMS

This modern Metropolis is advantageously located in the sought-after area of Magadh Nagar close to Dargah. It is a great space for Showrooms, Pop-Up Stores, Outlet and ideal for factory Outlets.



## DIAGNOSTIC CENTRES

The building is located in the center of the medical hub of town so this is the best place to expand diagnostic centers business. There are many medical institutions in the vicinity that generate clients on regular basis for this sector. Metropolis facilitates facilities of water and proper drainage systems which fulfills the basic structure for the business.

**M**  
apeksha's  
**METROPOLIS**  
COMMERCIAL TOWER

**M** METROPOLIS



**Modern.  
Massive.  
Magnificent**

- M** 24x7 Security
- M** Ample Parking Space
- M** High-Speed Elevators
- M** Spacious Corridors & Facilities
- M** 24x7 Power Backup



## 6<sup>th</sup> FLOOR PLAN



# METROPOLIS

## METROPOLIS



### RESTAURANT

A place to define the benchmark for restaurants in chomu town. Space for the restaurant and bar business offered by the metropolis. As per requirement space is available for the restaurant business. On the highway, location can be a profitable business for proper dining business.



### BANQUET SPACE

Metropolis can be adapted to fit virtually any specifications you may have in mind for a beautifully executed profitable business on this location for events, such as marriage, corporate or personal events.



### OFFICES

Offering stunning city views from the upper floors of the metropolis, inside the newly constructed 06 -story building, you'll find a timelessly refined structure with versatile breakout areas, carefully curated construction quality, and an air of calm sophistication.

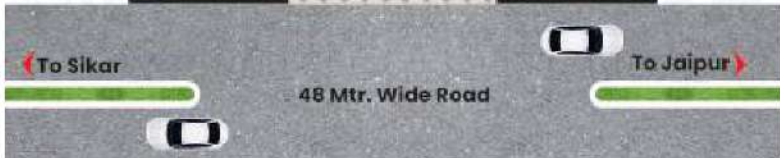
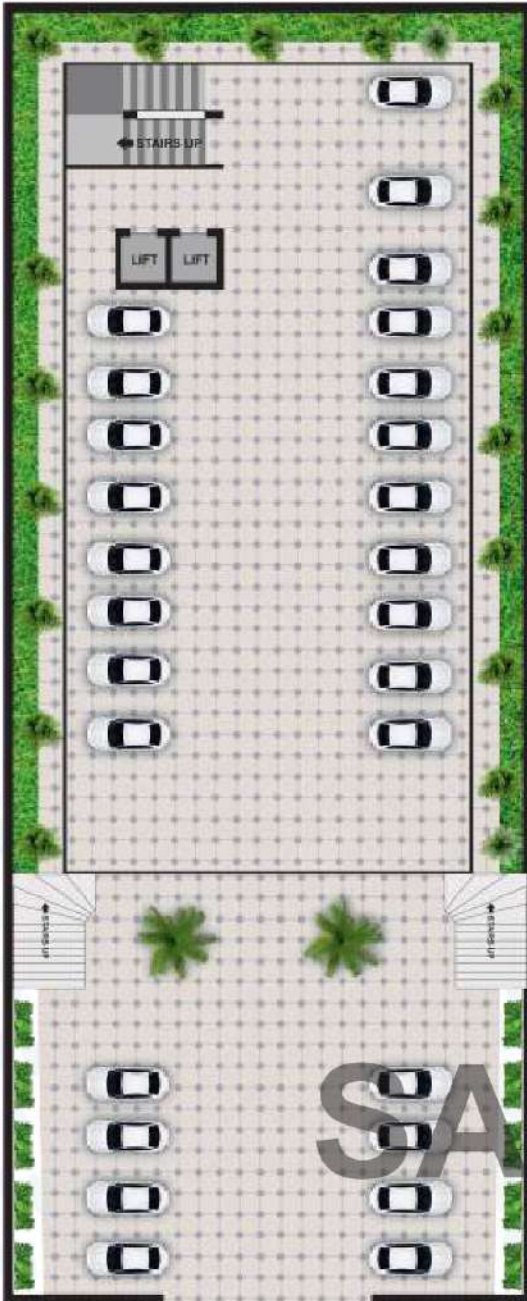


### LAW CHAMBERS

Sharing the same vision of providing fast, friendly and efficient services to clients, our offices can be the best place for law practitioners as the location is prime and towns most government offices are nearby.

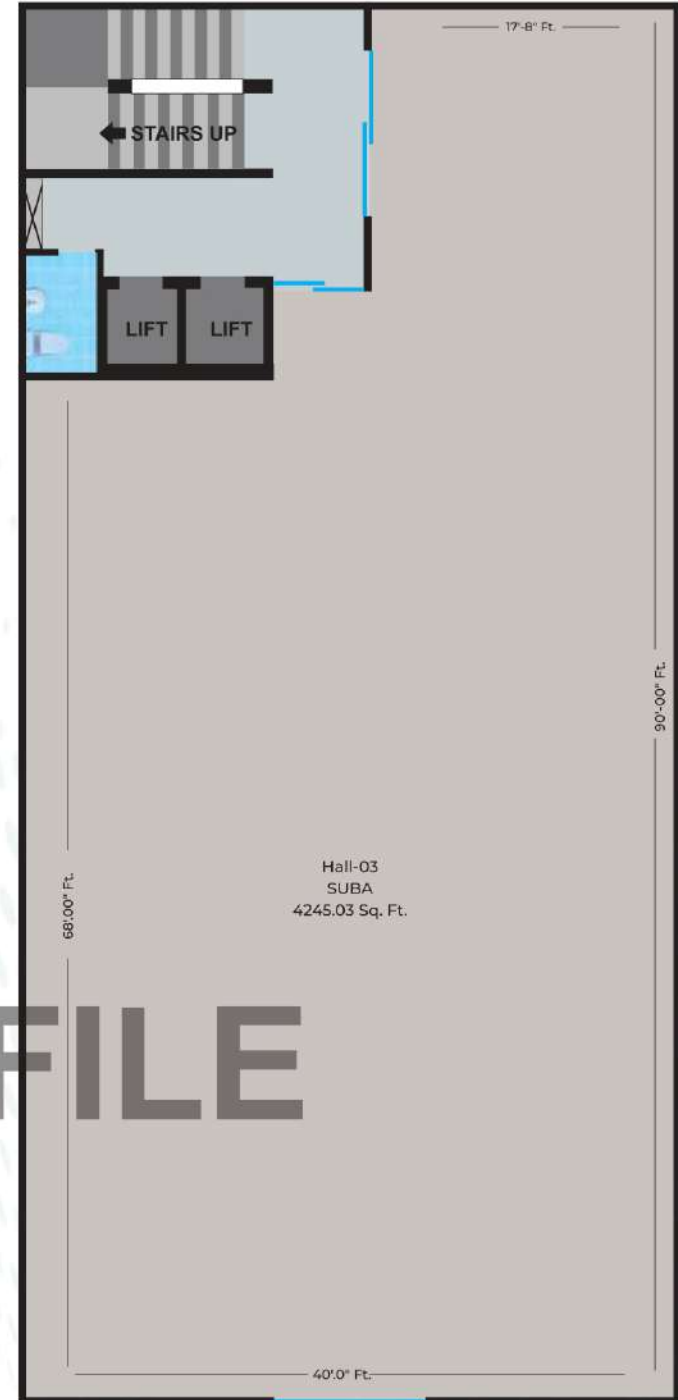
# SALE FILE

STILT FLOOR PLAN



METROPOLIS

5<sup>th</sup> FLOOR PLAN

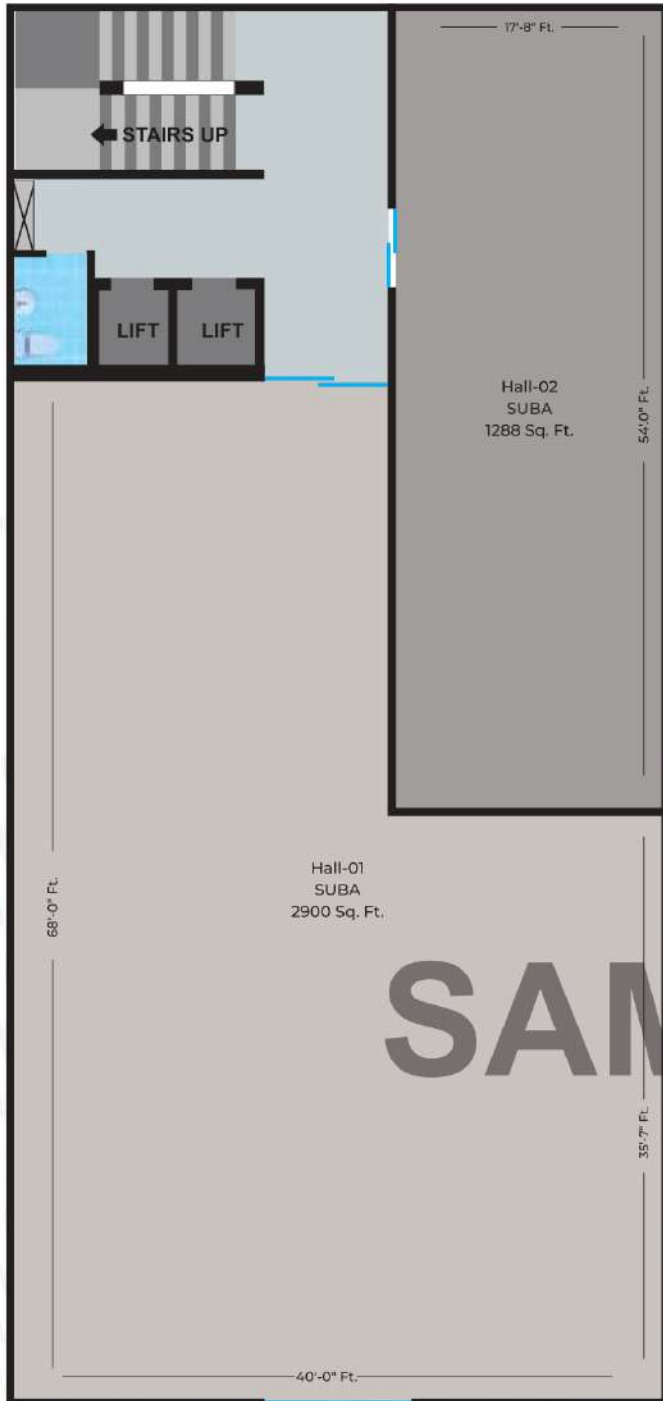


METROPOLIS

SAMPLE FILE



4<sup>th</sup> FLOOR PLAN



METROPOLIS

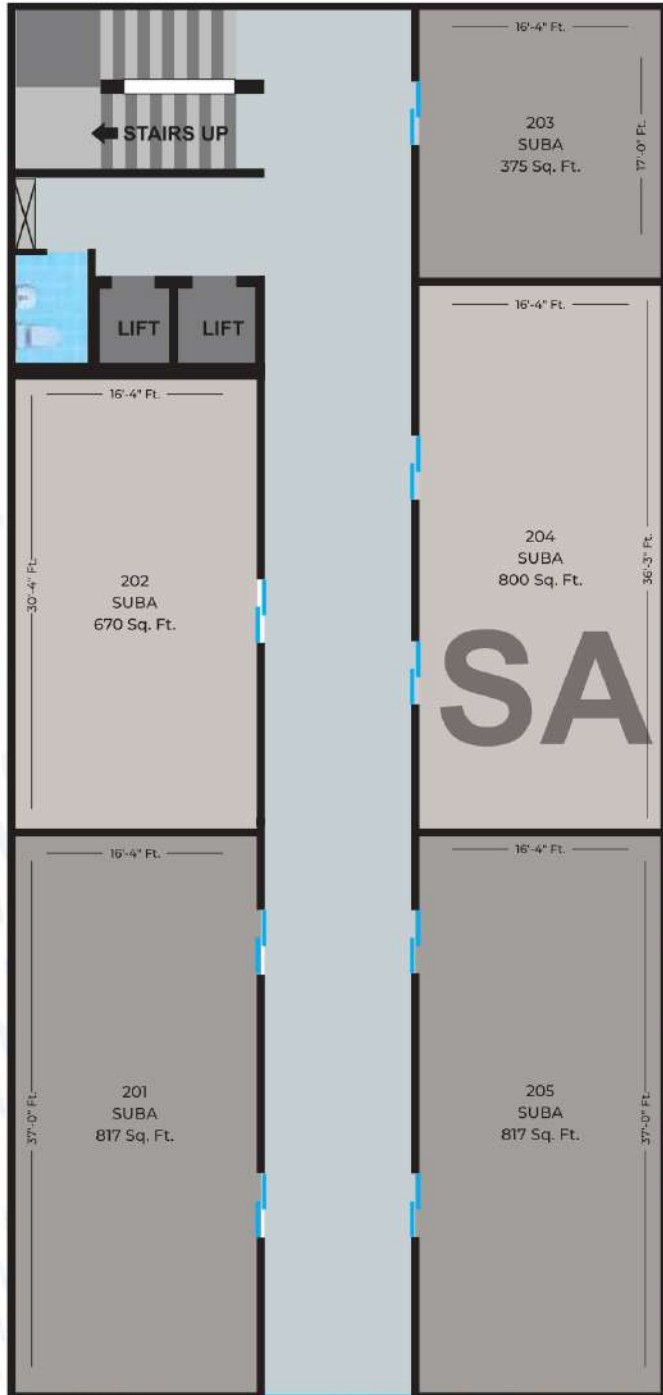
GROUND FLOOR PLAN



METROPOLIS

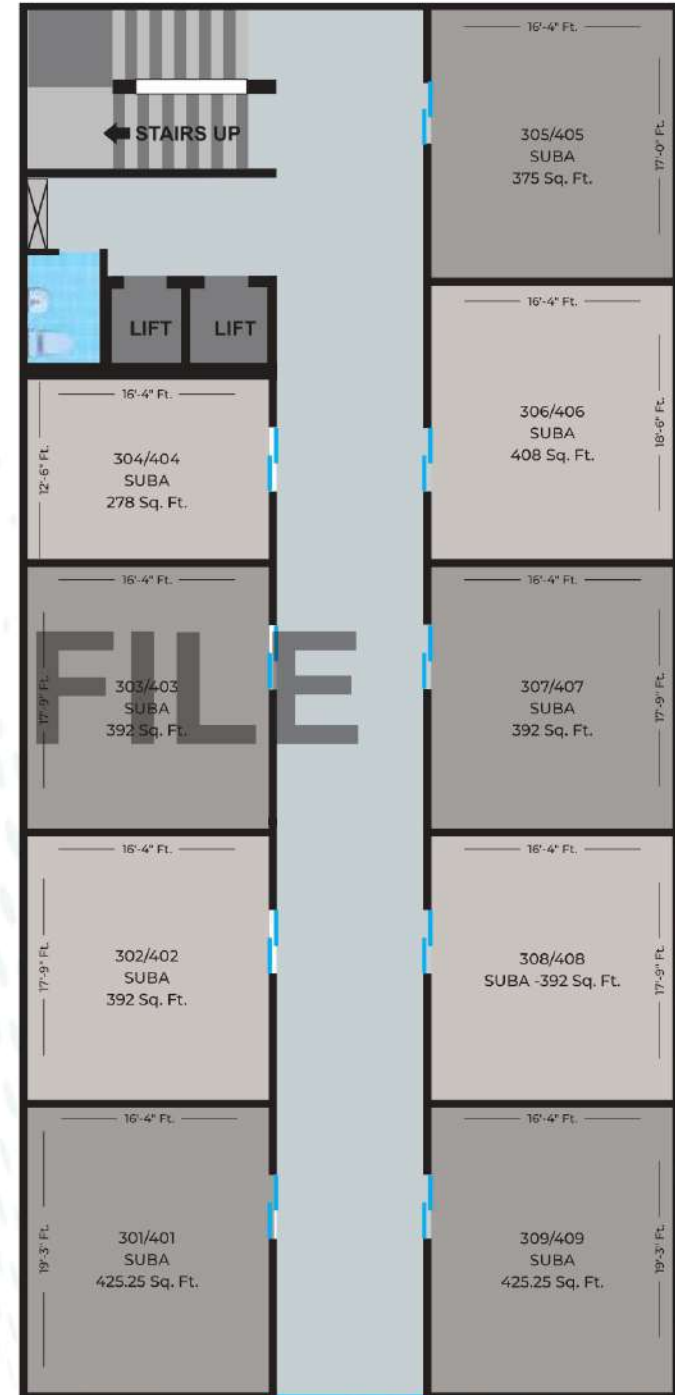
SAMPLE FILE

1<sup>st</sup> FLOOR PLAN



METROPOLIS

2<sup>nd</sup> & 3<sup>rd</sup> FLOOR PLAN



METROPOLIS

SAMPLE FILE