



Promoters & Developers

## APEKSHA HOUSING (P) LTD.

403, Alankar Plaza, Central Spine,  
Vidyadhar Nagar, Jaipur.

T. +91 141 2231787

E: [info@apekshagroup.com](mailto:info@apekshagroup.com)

w: [www.apekshagroup.com](http://www.apekshagroup.com)

FOR DETAILS CALL:

94140 66717, 94140 42096,

98290 93072, 88520 29607



FOLLOW US AT:



TOWNSHIP

INDUSTRIAL PARK

SHOPPING COMPLEX

RESIDENTIAL COMPLEX

Disclaimer: This Brochure is a presentation and not a legal document. All drawings, amenities, facilities, 3d views/elevations are subject to change as per the respective authorities/developers. Images, 3d views and elevations shown above are an artistic conceptualization/impression and do not purpose to replicate the exact products.

Color Splash



# rudraksh

## APEKSHA



rudraksh  
*royal retreat*

An edifice that romanticises the beautiful blend of luxury  
'Rudraksh' will surely witness millions of smile...

Experience ceaseless ecstasy as you wake up each morning,  
Listening to the melodious birds humming and hopping..  
Watch the shards of sunlight percolating,  
And the leaf-spattered green shades oscillating....

The site will undoubtedly sweep you off your feet  
For Rudraksh is a royal retreat....





## rudraksh *unconditional*

details that are beyond excellence.

Apeksha's Rudraksh is not just a project but magnificence for those who aspire to live the way they dream of. The beautiful texture of the furnishings illustrates its character with class and prestige. A 9 storey building, it has 36 amazingly spacious 2 / 3 BHK apartments which are customised with exemplary fixtures and charming interiors. Strategically tucked at the convenient Sikar Road, the edifice reflects the traditional heritage living coupled with design influences that are trendy and appealing.

Apeksha Group unveils to you a living utopia infusing a triumph of contemporary styling combined with intricate decor of the lavish architecture.

TERRACE  
GARDEN



Luxury  
Apartments



Blissful  
Living



rudraksh  
*delight*

Luxury that blurs the line with  
itself and sheer magic

Quite naturally from Apeksha, Rudraksh is a dainty living glory. Built with style and panache, luxury and refinement, it sets the standards so high that the word 'standard' seems meaningless. The elegant apartments with lush open spaces and brimming amenities put you amidst the blooms of luxury and the scent of quality. Rudraksh is that grand stage which makes performance of matchless ease and joy. The stunning profile of this outstanding nine storied building against the sky is the perfect antidote to the everyday urban grind. It's picturesque and idyllic setting provides the benefits of a modern city along with the peace and tranquillity.

If you've always believed in high quality living, it's time to put your beliefs into action and experience the optimal balance of a home and a retreat for you and your family.



Where nature's  
brilliance & abstract  
Is justified by  
Rudraksh's ambience  
so intact....



*rudraksh  
negal*

Blueprints of the blissful living

Enjoy the judiciously planned spacious apartments along with best-in-class specifications and absolute attention to the minutest detail.





## *rudraksh* adorable aura

Unmatched finesse and luxury

Design that contemplates your lifestyle is a fixation of delight. At Rudraksh, luxury and design excellence is quite evident. Soaked in luxury, the interior is simply refreshing with an international feel and is illuminated by airy spaces. The interior lets you experience the vivacity of brilliance. A quietest statement of class, the inherent design sings an ode to the sheer bliss. It contains the finest architectural and luxurious details that blend perfectly to form a private world of sophistication.

Befitting luxury and class, Rudraksh will enable the facets of your life to shine with distinct brilliance. A symbol of precision, international quality and perfect amalgamation of functionality and aesthetic design, we whisper luxury...absolute luxury.



rudraksh  
*keen innovation*

to pamper you in the exclusivity...

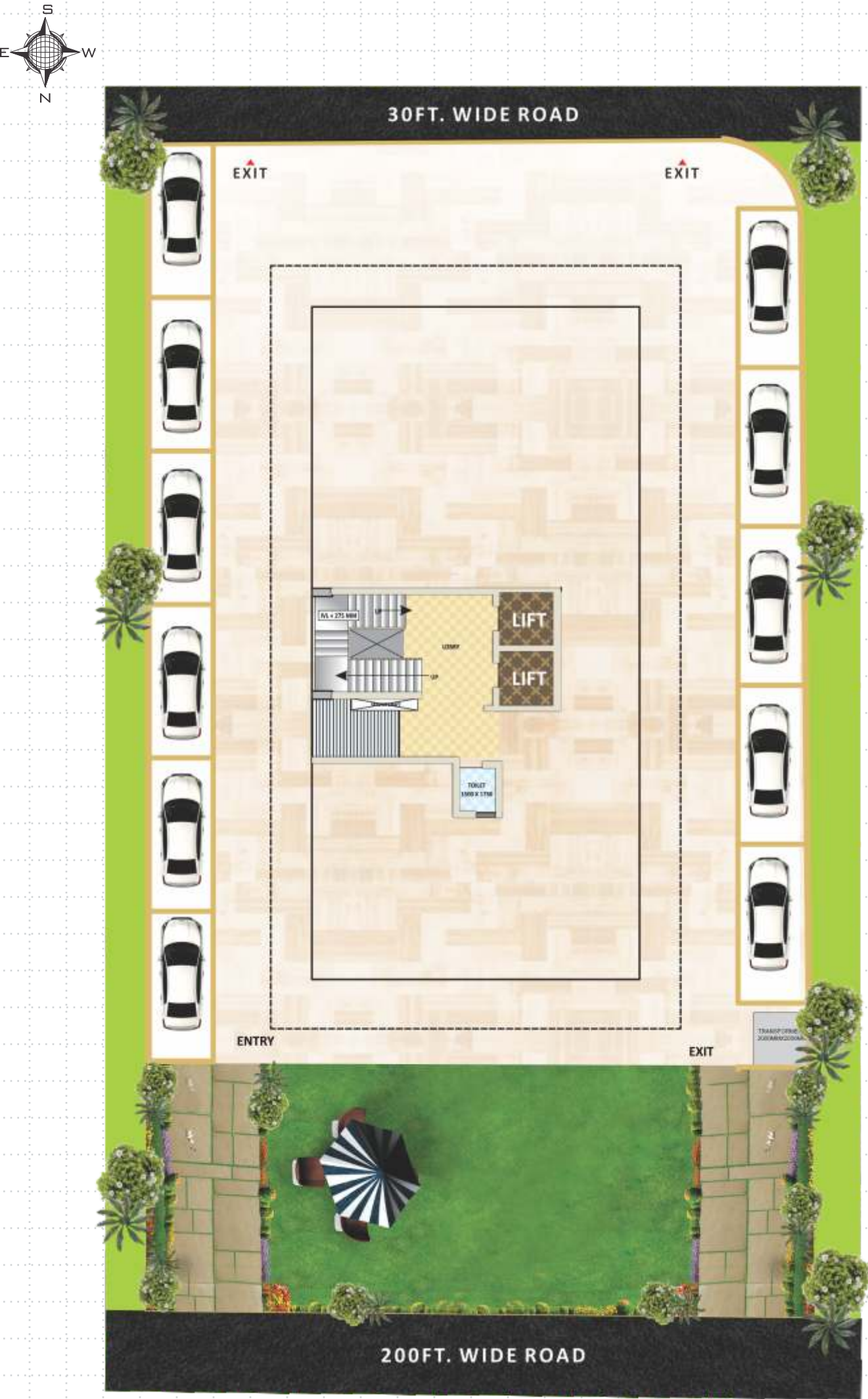
Rejoice the distinctive combination of comfort and class that envelopes you at every inch of your house. Rudraksh personifies the style that oozes luxury and paves the way for an air of happiness. The serene and pure ambience lets you hear the warm sun and feel the birds singing. Further, to add to the living experience, the edifice unveils the positive energy and lets you be fresh, whole day long.

Experience exuberance and opulence and have an affair with a life which touches radiance and redefines leisure..!

- Fully equipped Gymnasium
- Multipurpose Hall
- Waiting Lounge
- Well Designed Lobby
- Indoor Games



STILT FLOOR PLAN



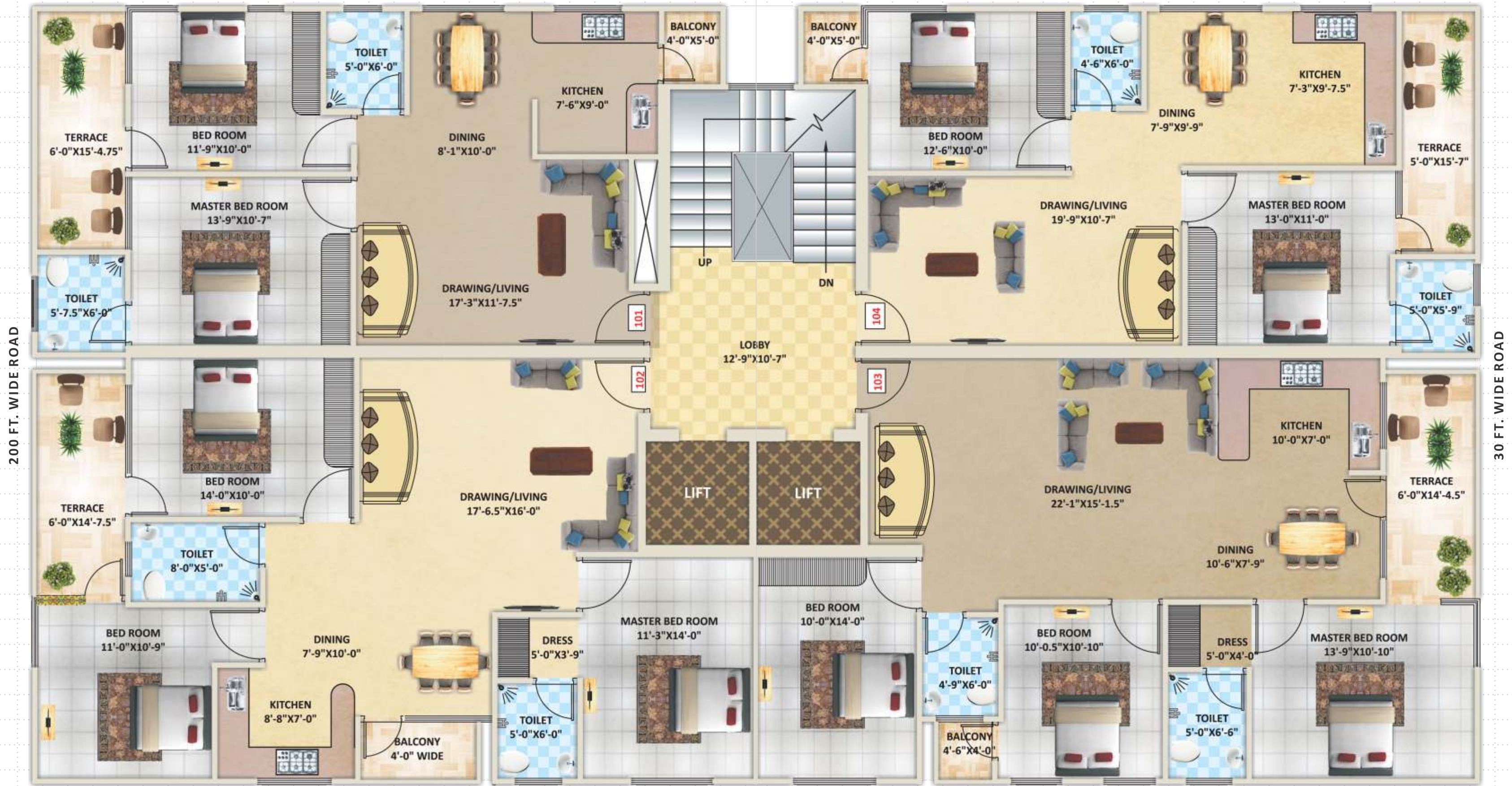
TERRACE FLOOR PLAN (CLUB HOUSE)



TYPICAL FLOOR PLAN



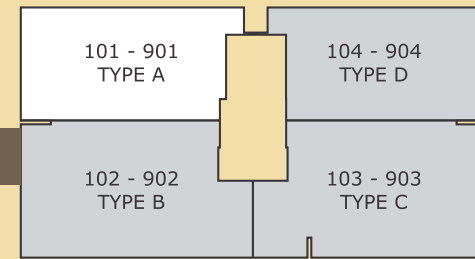
Flat No.	SBU Area
101 - 901	1091.25 sqft.
102 - 902	1445.00 sqft.
103 - 903	1442.50 sqft.
104 - 904	1096.25 sqft.



## TYPE A

FLAT NO 101 - 901

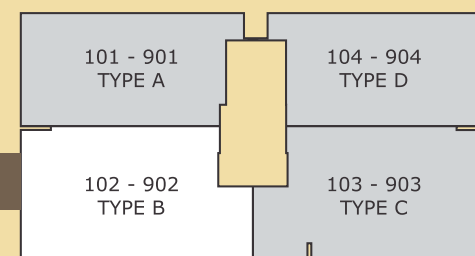
1091.25 SQFT.



## TYPE B

FLAT NO 102 - 902

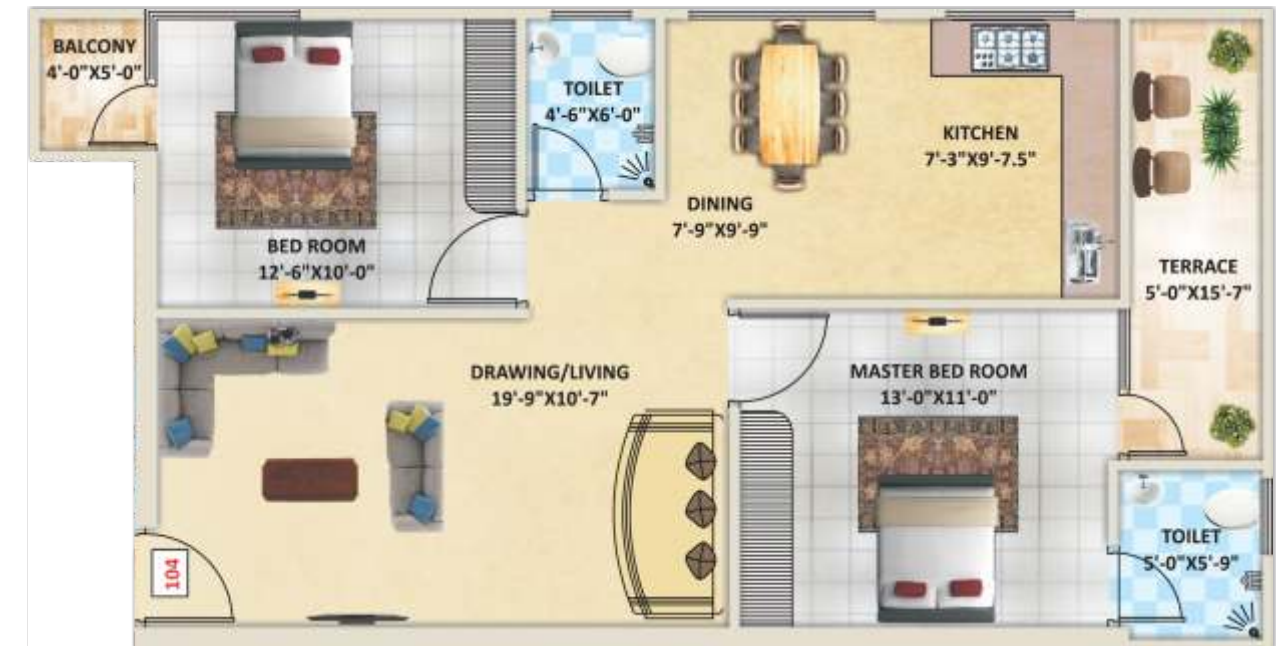
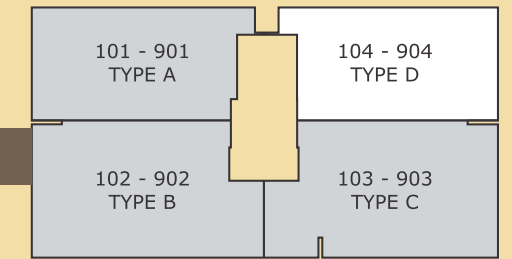
1445.00 SQFT.



## TYPE D

FLAT NO 104 - 904

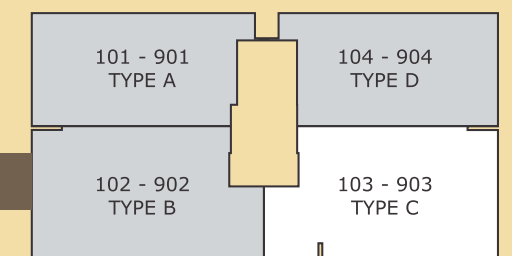
1096.25 SQFT.



## TYPE C

FLAT NO 103 - 903

1442.50 SQFT.



LIVING ROOM & DINNING ROOM	FLOORS WALLS CEILINGS	Designer Branded Vitrified Tiles Plastic emulsion paint Oil Bound Distemper
MASTER BED ROOM	FLOORS WALLS CEILINGS	Laminated/wooden floor Branded Oil Paints Oil Bound Distemper
BED ROOM	FLOORS WALLS CEILINGS	Branded Vitrified Tiles/Marble Oil Bound Distemper Oil Bound Distemper
TOILETS	FLOORS  FITTINGS & FIXTURES  WALLS	Combination of one or more designer tiles Anti-Skid Ceramic Tiles  Single lever branded CP fittings, wall hung WC, exhaust fan, shower panels in all toilets (except servant toilet and powder room)  Combination of one or more of designer tiles
KITCHEN	FLOORS  FITTINGS & FIXTURES WALLS  CEILINGS	Combination of one or more of designer granite/ marble/ tiles (with Anti-Skid Ceramic Tiles) Modular Kitchen with Granite Counter, SS sink and CP fittings 2' high vitrified tiles above counter and oil bound distemper on remaining area Oil Bound Distemper
BALCONIES	FLOORS FITTINGS & FIXTURES WALLS CEILINGS	vitrified/ceramic tiles SS GLASS railing, integrated ceiling lights Weather coat emulsion Weather coat emulsion/ Oil Bound Distemper
LIFT LOBBIES/ CORRIDORS	FLOORS WALLS CEILINGS	Combination of one or more of granite/ marble/ terrazzo Oil bound distemper Oil bound distemper
STRUCTURE	Earth-quake resistant structure according to latest seismic code, RCC framed structure.	
ELECTRICAL	Branded Modular switches, copper electrical wiring throughout in concealed conduit with provision for light points, power points, TV, LAN, and telephone sockets. Power back for 2 AC points & light point(s).	
STAIRCASE	FLOORS FITTINGS & FIXTURES WALLS CEILINGS	Granite/ Kota/ Marble Stones Enamel painted MS railing OR SS railing, light saver ceiling lights Weather coat emulsion Oil Bound Distemper
DOORS	Door framed with paneled shutters. Fire proof engineered doors where required	
WINDOW	UPVC / Aluminium anodized framed windows	
SECURITY SYSTEM	CCTV monitoring	
EXTERNAL FINISH	Combination of one or more of all weather paint/ stone/ Alco / grit work as per elevation	
TERRACE GARDEN/ COMMON HALL	HALL with indoor games, multipurpose room at Roof Top & Gymnasium Area. Terrace garden with seating arrangement with lush green planter & decorative lights	
AMENITIES	Power back up Common Areas, Including Staircases, Elevators, Street Lighting and Generators and Pumps, water harvesting, CCTV, Access control, , Parking*.(with Mechanical Parking)	

**Site Address**

  
**rudraksh**  
**APEKSHA**

4D Colony, Kedia Palace Road,  
Murlipura, Jaipur.



If an address speaks for itself, Rudraksh Apeksha would speak volumes. Situated at the Sikar Road, Rudraksh places you right in the thick of all that makes things fun and exciting.

It is an inspirational address that offers an incomparable top-notch location to bestow you with your housing pride and reveal the aspiration of owning a dream home. The master plan actually evokes a sense of serenity, security and simplicity.

#### Neighborhood

Rudraksh is the epitome of well-connected luxury in the sense as to its proximity with-

- Planned development & good roads complemented with greenery all around.
- Proximity to S.K. Sony Hospital (800 mtr).
- Close proximity to Murlipura, Vidyadhar Nagar and VKIA
- Surrounded by commercial complexes, residential colonies and retail outlets.

# OUR PROJECTS



Apeksha Group was established with the goal of offering our clients more n more quality, more plans to choose from, more options, and more detail.

One of the pioneer real estate brands of the city, Apeksha Group deals in constructions and marketing of plots, flats, villas, offices and commercial spaces. We're proud to stay "2 steps ahead" of our competitors by offering a better home at a better price. At apeksha group we strive to keep our clients engaged during the construction process, ensuring that you understand every step along the way and can make the decisions that will make your new home just 'perfect' for you for we know you will simply have a better experience. That's why with your own home at a project developed by Apeksha Group, you will find 'Your Perfect Dream Home'!